

Baragar SYSTEMS

PLANNING INTELLIGENCE FOR INTELLIGENT PLANNING



Projections



Boundary Planning



Staff Optimization



Policy Development & Identification of Best Practices



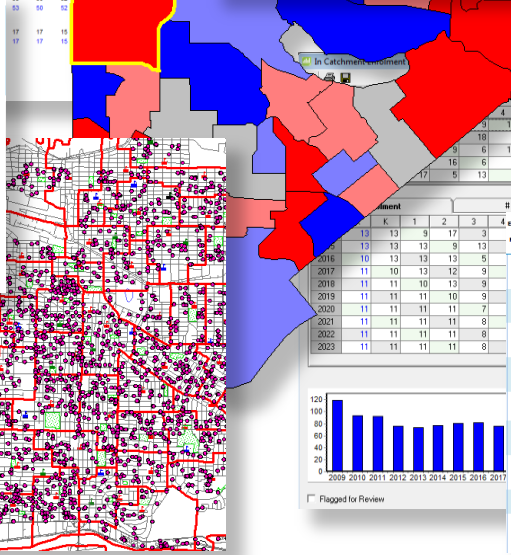
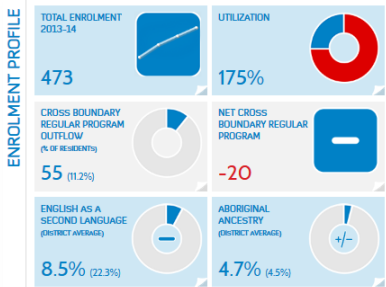
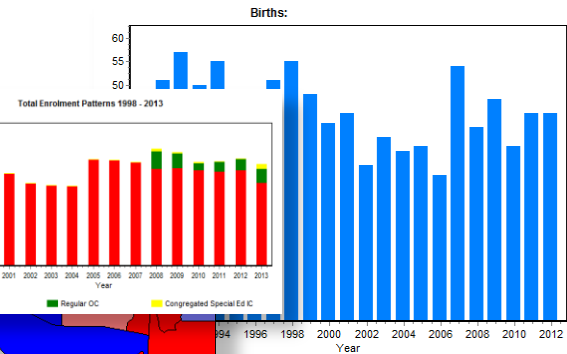
Community & School Profiling



School Locator

Capacities and Projected Enrolments by Program

School	Program	Official Capacity		Actual													Projected Enrolment												
		2013	2014	2013	2014	2015	2016	2017	2018	2019	2020	2021	2022	2023	2024	2025	2026	2027	2028										
Pineview Public School	Regular	266	287	282	292	301	317	324	338	349	349	355	363	368	369	373	376	38											
	Total	324	286	287	292	301	317	324	338	349	349	355	363	368	369	373	376	38											
Queen Elizabeth Public School	Regular	286	299	294	278	271	268	267	265	266	263	266	273	274															
	Total	320	286	299	294	278	271	268	267	265	266	263	266	273	274														
Riverview Collegiate Intermediate School	Regular	139	117	119	127	124	116	108	115	116	111	114																	
	Total	139	117	119	127	124	116	108	115	116	111	114																	
Rockwood Public School	Regular	282	288	288	304	309	311	314	317	313	322	324																	
	Total	458	379	380	410	412	410	411	416	419	421	431	430																
Sherwood Public School	Regular	126	113	114	114	112	109	105	110	107	115	115																	
	Total	167	129	113	114	114	112	109	105	110	107	115	115																
Water Zadow Public School	Regular	288	288	285	282	285	287	278	273	272	268	271																	
	Total	477	378	354	368	358	362	368	371	375	379	368	385																



Year	4	5	6	1.3	4.6	1.6	JK-6	Total
2016	13	13	9	17	3			55
2017	11	10	13	12	9			55
2018	11	11	10	13	9			54
2019	11	11	11	10	9			53
2020	11	11	11	11	7			51
2021	11	11	11	11	8			52
2022	11	11	11	11	8			52
2023	11	11	11	11	8			52

Year	Enrolment	Utilization	Births	Population Pressure	Youth Negative Pressure	Participation	Out of District	Net Cross	Out of District	Capture	Socio-Economic
2016	548	112%	65%	2.2%	63%	67	105	3			
2017	535	104%	65%	1.1%	55%	83	148	4			
2018	398	81%	65%	2.1%	66%	34	162	5			
2019	191	65%	65%	0.9%	29%	216	-166	1			
2020	136								11		
2021	309	97%	65%	0.3%	38%	162	-74	0			
2022	306	74%	65%	0%	55%	34	134	1			
2023	84								5		
2024	415	94%	65%	-2.0%	35%	112	-68	2			

"We have found that the Baragar software has improved our ability to predict our enrolment more accurately and help us explain the data in a meaningful and easily understood fashion to our community."

RON WESTON
Chief Superintendent
St. James-Assiniboia School District
Winnipeg, Manitoba

604-535-3690
www.baragar.com



Custom Planning Software Solutions for School Districts Committed to Data-Driven Decision Making

- Software exclusively designed for School and District Planning.
- Serving School Districts for 35 years.
- Turnkey – data is purchased, gathered, cleaned and incorporated into custom software.
- Unique data sources.
- Client feedback and ideas integrated into software development process.
- District data sources are integrated into software.
- Preschooler data included for each School.
- ‘What if’ scenarios – dynamic changes lead to conversations and collaboration amongst District departments.
- Credibility, objectivity and transparency for public presentations.
- FREE training and ‘on demand’ training tools



STAFF ALLOCATOR – OPTIMIZE

Save FTEs for budgeting or re-assignment to schools in need. Optimize the organization of each elementary and middle school in the most cost-effective manner based on **contractual** and **educational** parameters concerning class size and/or composition.



GEO SCHOOL – EFFICIENCIES

A geographic information system designed to aid in **capital resource management** and educational problem-solving.



DEMOGRAPHIC DYNAMICS – ACCURACY

Interactive enrolment projection software that utilizes unique data sources to facilitate the analysis of future **staffing** and **capital** requirements for the next 15 years.



THEME MAP – BEST PRACTICES

A thematic display of information based on the school boundaries of the District – aids in the development of best practices through analysis of student achievement and socio-economic profiling. It has been described as an ideal vehicle for policy development.



SCHOOL LOCATOR – ONLINE

Answers public queries from your District website as to where their children should attend school based on their home address.



DISTRICT INTELLIGENCE – MORE THAN A DASHBOARD

A web-based tool – designed to increase access to your District’s data in a format that is easy to interpret.